

# Santa Monica Dispatch



## SANTA MONICA-MALIBU EDUCATION FOUNDATION RECEIVES \$450,000 BEQUEST

Posted on January 15, 2015 by Peggy Clifford



Share



The Santa Monica-Malibu Education Foundation (SMMEF) has announced a major bequest of just over \$450,000 that will support the Santa Monica-Malibu Unified School District's (SMMUSD) Vision for Student Success program. The gift is one of the largest in SMMEF's 33-year history.

“We are so grateful to receive this large bequest,” said Linda Greenberg, SMMEF Executive Director. “Like all donations to SMMEF, this gift will help ensure that the amazing SMMEF-funded staff and programs in our schools, including teacher training, arts education, additional middle and high school classes, and instructional assistants, continue during the next school year.”

Made by the late long-time Santa Monica resident Judi Lynne, the bequest was described by Foundation officials “as a powerful expression of support for public education.”

The SMMUSD “:Vision for Student Success” (VSS) is a comprehensive set of programs designed to improve student achievement and success. Gifts to SMMEF provide funding for SMMUSD to offer the programs at every school and grade level in the district. VSS programs include instructional assistants, literacy coaches, art instruction for all elementary grades, additional class sections for middle and high schools, professional development for teachers and instructional assistants, and discretionary grants for school-specific enrichment programs.

With this bequest, SMMEF has raised \$1,820,463 to fund VSS programs during the 2015-16 school year, out of a

total annual goal of \$4 million to fully fund these programs. The fundraising deadline is June 30, 2015.

“Gifts like this one, which benefit students and schools district-wide, have to be our focus if we are to achieve equity in our district and give all students opportunities to succeed,” said Greenberg. “We hope this gift will inspire parents, community members and corporate partners to join us in funding these vital programs for every student.”

Established in 1982 in response to devastating federal and state education budget cuts, the Santa Monica-Malibu Education Foundation (SMMEF) was organized by a dedicated group of parents, community leaders, and local business owners to enhance and supplement the curriculum of the Santa Monica-Malibu Unified School District. SMMEF’s mission is to engage the community to invest in a complete educational experience for all students in the Santa Monica and Malibu public schools. To learn more about SMMEF and SMMUSD’s Vision for Student Success, visit [www.smmeff.org](http://www.smmeff.org), follow us on Twitter: @smmeff or like it on [www.Facebook.com/smmeff](http://www.Facebook.com/smmeff)

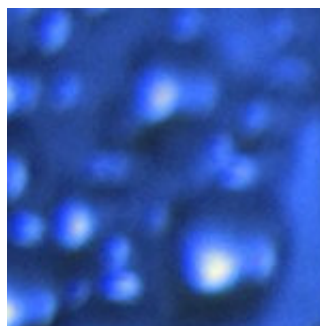
### Related Posts



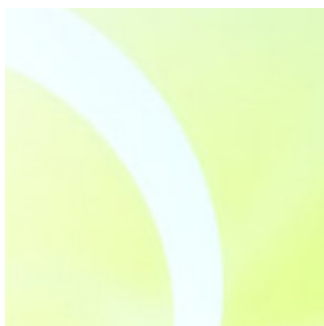
Coyote Seen on Latimer



WHY LENNY KRAVITZ TAKES SOLACE IN AN AIRSTREAM



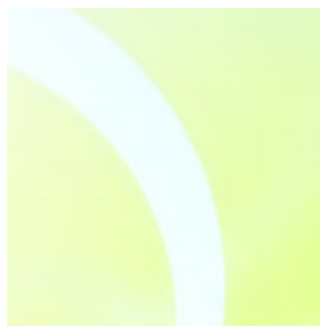
CHALLENGE TO LOCAL MEDIA



WAXMAN PUTS PRESSURE ON TRIBUNE CO.



PROJECT THREATENS SANTA MONICA WAY OF LIFE: PART ONE



COUNCIL DELAYS DECISION ON TRAILER PARK PROJECT

### Facebook

Posted in [Daily](#)

[permalink \[http://www.santamonicadispatch.com/2015/01/santa-monica-malibu-education-foundation-receives-450000-bequest/\]](http://www.santamonicadispatch.com/2015/01/santa-monica-malibu-education-foundation-receives-450000-bequest/)

